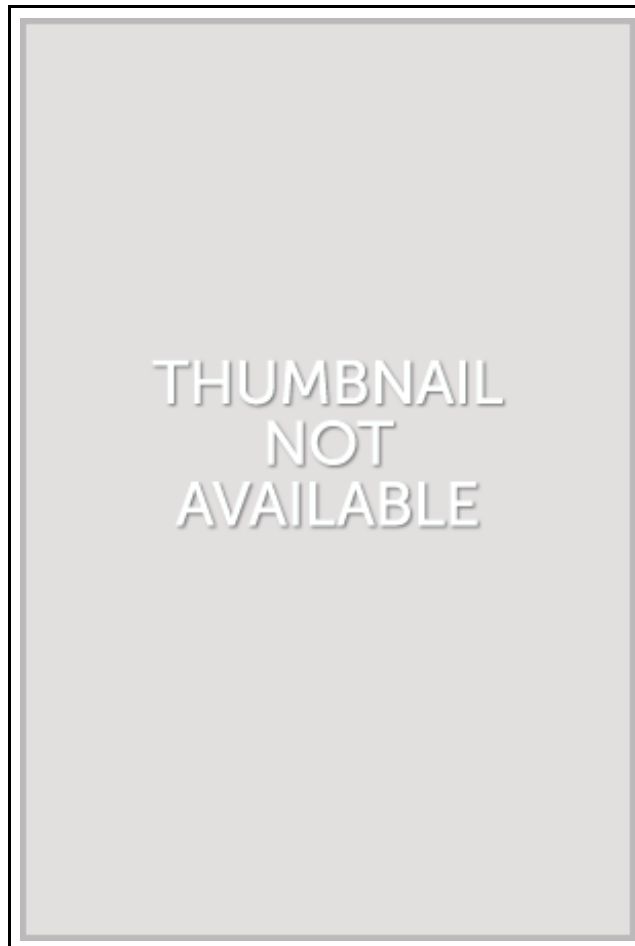


**Concrete and Reinforced Concrete; A Condensed  
Practical Treatise on the Problems of Concrete  
Construction, Including Cement Mixtures, Tests, Beam  
and Slab Design, Construction Work, Retaining Walls,  
Etc (Paperback)**



Filesize: 3.15 MB

***Reviews***

*This composed pdf is great. This can be for all those who statte that there was not a well worth looking at. I am just happy to explain how this is actually the finest pdf we have go through inside my own daily life and could be he greatest publication for ever.*

***(Conrad Heaney)***

## CONCRETE AND REINFORCED CONCRETE; A CONDENSED PRACTICAL TREATISE ON THE PROBLEMS OF CONCRETE CONSTRUCTION, INCLUDING CEMENT MIXTURES, TESTS, BEAM AND SLAB DESIGN, CONSTRUCTION WORK, RETAINING WALLS, ETC (PAPERBACK)

DOWNLOAD



To save **Concrete and Reinforced Concrete; A Condensed Practical Treatise on the Problems of Concrete Construction, Including Cement Mixtures, Tests, Beam and Slab Design, Construction Work, Retaining Walls, Etc (Paperback)** eBook, please access the button beneath and save the file or get access to additional information which might be in conjunction with **CONCRETE AND REINFORCED CONCRETE; A CONDENSED PRACTICAL TREATISE ON THE PROBLEMS OF CONCRETE CONSTRUCTION, INCLUDING CEMENT MIXTURES, TESTS, BEAM AND SLAB DESIGN, CONSTRUCTION WORK, RETAINING WALLS, ETC (PAPERBACK)** ebook.

Rarebooksclub.com, United States, 2012. Paperback. Book Condition: New. 246 x 189 mm. Language: English . Brand New Book \*\*\*\*\* Print on Demand \*\*\*\*\*.This historic book may have numerous typos and missing text. Purchasers can download a free scanned copy of the original book (without typos) from the publisher. Not indexed. Not illustrated. 1916 Excerpt: . assistance furnished by the stirrups and the bars, which would come up diagonally through the ends of the beam--where this maximum shear occurs--nearly to the top of the slab. The vertical planes on each side of the rib have a combined width of 10 inches, and therefore the unit stress is  $r_h \times 154 = 169$  pounds per square inch. This is a case of true shear, though it is somewhat larger than the permissible working shear. But there are still other shearing stresses in these vertical planes. In the case of a strip of the slab, say, one foot wide, which is reinforced by slab bars parallel to the girder, the elasticity of such a strip (if disconnected from the girder) would cause it to sag in the center. This must be prevented by the shearing strength of the concrete in the vertical plane along each edge of the girder rib. On account of the combined shearing stresses along these planes, it is usual to specify that when girders are parallel with the slab bars, bars shall be placed across the girder and through the top of the slab for the special purpose of resisting these shearing stresses. Some of the stresses are indefinite, and therefore no precise rules can be computed for the amount of the reinforcement. But since the amount required is evidently very small, no great percentage of accuracy is important. Specifications on this point usually require -inch bars, 5 feet...



**Read Concrete and Reinforced Concrete; A Condensed Practical Treatise on the Problems of Concrete Construction, Including Cement Mixtures, Tests, Beam and Slab Design, Construction Work, Retaining Walls, Etc (Paperback) Online**



**Download PDF Concrete and Reinforced Concrete; A Condensed Practical Treatise on the Problems of Concrete Construction, Including Cement Mixtures, Tests, Beam and Slab Design, Construction Work, Retaining Walls, Etc (Paperback)**

## You May Also Like



**[PDF] Index to the Classified Subject Catalogue of the Buffalo Library; The Whole System Being Adopted from the Classification and Subject Index of Mr. Melvil Dewey, with Some Modifications . (Paperback)**

Access the hyperlink below to download "Index to the Classified Subject Catalogue of the Buffalo Library; The Whole System Being Adopted from the Classification and Subject Index of Mr. Melvil Dewey, with Some Modifications . (Paperback)" file.

[Save Document »](#)



**[PDF] A Kindergarten Manual for Jewish Religious Schools; Teacher s Text Book for Use in School and Home (Paperback)**

Access the hyperlink below to download "A Kindergarten Manual for Jewish Religious Schools; Teacher s Text Book for Use in School and Home (Paperback)" file.

[Save Document »](#)



**[PDF] A Year Book for Primary Grades; Based on Froebel s Mother Plays (Paperback)**

Access the hyperlink below to download "A Year Book for Primary Grades; Based on Froebel s Mother Plays (Paperback)" file.

[Save Document »](#)



**[PDF] Ohio Court Rules 2012, Government of Bench Bar (Paperback)**

Access the hyperlink below to download "Ohio Court Rules 2012, Government of Bench Bar (Paperback)" file.

[Save Document »](#)



**[PDF] Ohio Court Rules 2012, Practice Procedure (Paperback)**

Access the hyperlink below to download "Ohio Court Rules 2012, Practice Procedure (Paperback)" file.

[Save Document »](#)



**[PDF] Kindergarten Culture in the Family and Kindergarten; A Complete Sketch of Froebel s System of Early Education, Adapted to American Institutions. for the Use of Mothers and Teachers (Paperback)**

Access the hyperlink below to download "Kindergarten Culture in the Family and Kindergarten; A Complete Sketch of Froebel s System of Early Education, Adapted to American Institutions. for the Use of Mothers and Teachers (Paperback)" file.

[Save Document »](#)